

ASIA • AFRICA • CENTRAL AMERICA • SOUTH AMERICA



ASIA • AFRICA • CENTRAL AMERICA • SOUTH AMERICA

IMPORTER OF TROPICAL BUTTERFLIES AND INSECTS

LPS

2016





LPS LLC is the dominant supplier of high quality tropical butterfly and moth pupae as well as other unique insects. We import tropical butterfly pupae in bulk to our USDA inspected and permitted Denver distributing center, saving exhibitors the hassles, potential delays, and extra expense of direct importing.

LPS LLC was started in 2005 as a partnership between **London Pupae Supplies**, England and **Kallima Consultants**, CO when it became apparent that an office was needed in the United States to help expedite the shipping and customs process. Originally called **London Pupae Supplies of Los Angeles** until 2010 when Richard Cowan bought out the partnership and consolidated the operation into **LPS LLC**.

LPS LLC operation is now located in Denver, Colorado and ships pupae to permitted US and Canadian customers from our state of the art lab facilities. This office has become the primary distribution location for all of North America and works closely with the US Department of Agriculture to streamline the importing and inspection process.

Quality matters

LPS LLC goal is to ship top quality A1 pupae. Quality starts at the farms where production selects the top breeding stock and takes extra precautions to control parasites every step of the way. Shipments are scrutinized in Denver as one more step to insure that only the healthiest pupae are sent to the customer.



How To Order

No Red/White labels needed.

US customers need an USDA INTERSTATE MOVEMENT permit to receive pupae from LPS LLC.

LPS LLC wants to be sure you receive only the best quality and variety of pupae available. In order to assist us in filling your orders, it would help us to know any preferences and limitations.

- **Number of pupae per order**
- **Frequency of order**
- **Budget limitations**
- **Regional requests**
- **Favorites/Priorities list**
- **Unwanted list**
- **Special requests (species, maximum number per species, limited swallowtails, etc.)**

Number / Frequency

Specify how many pupae and how often you will need the shipments. A request such as “500 pupae every 2 weeks” will allow us to schedule larger shipments and more variety those weeks. Working out a shipping schedule in advance will guarantee the best variety.

Budget constraints

Requesting “\$500 worth of pupae every week” or “up to 300 pupae every week but not exceeding \$1000 per order” will allow us to best fill the orders without getting complaints from your accounting department.

Regional orders

We currently have several suppliers from different regions of the world. If your exhibit is focusing on a particular area please let us know.

Favorites/Priorities list

We work from species listed on your current USDA permits or CFIA LIST A approved species. Giving us a list of favorite species (i.e. “*Morpho peleides* minimum 50/order”) will allow us to prioritize stock to your orders.

Unwanted species

Your USDA/CFIA permit list may contain species that don't fly well in your display. We will avoid sending any species from your “unwanted list.”

Special Orders / Requests

Many species listed in this catalog are very seasonal and therefore not always available. To request specific species, especially those that are only available seasonally, may require additional communication with the farmers. If you have a special request for some favorite species, first make sure they are listed on your USDA/CFIA permit. Since the variety from the farms are affected by seasons and weather conditions we cannot guarantee when or how many will be available. Priority is given to special orders whenever those species are received into our office.



Bulk Shipping

Receiving bulk boxes requires a valid USDA Interstate Movement permit. No red/white labels are needed.

LPS LLC has shipping arrangements with several farms. Break bulk shipping allows the shipper to combine boxes into one pallet to Denver. They are separated and sent to the final exhibits using FedEx/UPS Priority Overnight services. This results with savings from the consolidated shipping and inspection charges.

CRES and El Bosque will include the freight charges on their invoices.

All other suppliers will charge pupae only and LPS will invoice a flat **\$250** fee to cover the freight and inspection charges.

Current partners include:

- Alas de Columbia, Columbia
- Bioproductores, El Salvador
- Butterfly House Penang (TEH), Malaysia
- CRES (SEC), Costa Rica
- Ecodecision (Heliconius Works), Ecuador
- El Bosque Nuevo, Costa Rica
- Flora Farm, Philippines
- JLM Butterfly, Philippines
- Ma. Corona, Philippines
- MIDA, Kenya
- Silke Weyland, Australia
- Tropical Insects Enterprises (TIE), Philippines

Shipping Charges - LPS orders

Shipping and handling charges will be **\$50.00** per domestic shipment and **\$300.00** per package for international shipments. This includes the USFWS inspection fees. Additional charges may be added for larger orders.



Tax and Payment Methods

New customers must pre-pay for shipments unless other credit terms have been approved.

WIRE: Bank details will be sent upon request. All charges to be paid by remitter.

CHECKS: All checks must be drawn on a US bank.

CREDIT CARDS: Visa and MasterCard accepted.

Colorado customers will be subject to sales tax.

(OVERDUE ACCOUNTS will be charged interest at 1.5% per month.)



NYMPHALIDAE

● Regular inventory

P440
Charaxes acuminatusP422
Charaxes bohemani● P440A
Charaxes brutus● P440B
Charaxes candiope● P440C
Charaxes castor● P440D
Charaxes cithaeron● P440D1
Charaxes etesipeP423
Charaxes guderianaP424
Charaxes jahlusaP426
Charaxes jasius● P440E
Charaxes lastiP440E1
Charaxes macclouniP440E9
Charaxes pollux● P440F
Charaxes protoclea● P440G
Charaxes varanes● P440H
Charaxes violettaP440I
Charaxes zoolinaP420
Cymothoe coranus● P445C
Euphaedra neophronP450B
Euxanthe tiberius● P450A
Euxanthe wakefieldiP460
Hypolimnas antevorta● P460A
Hypolimnas anthedonP469
Hypolimnas deceptorP462
Hypolimnas misippus● P463
Hypolimnas monterionisP464A
Hypolimnas salmactis● P464
Hypolimnas usambara

		COMMON NAME	PRICE USD
NYMPHALIDAE			
P440	<i>Charaxes acuminatus</i>	Mountain Pearl Charaxes	3.50
P422	<i>Charaxes bohemani</i>	Large Blue Charaxes	3.50
● P440A	<i>Charaxes brutus</i>	White-barred Charaxes	3.50
● P440B	<i>Charaxes candiope</i>	Green-veined Charaxes	3.50
● P440C	<i>Charaxes castor</i>	Giant Charaxes	3.50
● P440D	<i>Charaxes cithaeron</i>	Blue-spotted Charaxes	3.50
● P440D1	<i>Charaxes etesipe</i>	Savannah Charaxes	3.50
P423	<i>Charaxes guderiana</i>	Guderian's Charaxes	3.50
P424	<i>Charaxes jahlusa</i>	Pearl Spotted Charaxes	3.50
P426	<i>Charaxes jasius (saturnus)</i>	Tow-tailed Pasha	3.50
● P440E	<i>Charaxes lasti</i>	Silver-striped Charaxes	3.50
P440E1	<i>Charaxes macclouni</i>	Red Coast Charaxes	3.50
P440E9	<i>Charaxes pollux</i>	Black-bordered Charaxes	3.50
● P440F	<i>Charaxes protoctlea</i>	Flame-bordered Charaxes	3.50
● P440G	<i>Charaxes varanes</i>	Pearl Charaxes	3.50
● P440H	<i>Charaxes violetta</i>	Violet-spotted Charaxes	3.50
P440I	<i>Charaxes zoolina</i>	Club-tailed Charaxes	3.50
P420	<i>Cymothoe coranus</i>	Blonde Glider	3.50
● P445C	<i>Euphaedra neophron</i>	Gold Banded Forester	3.50
P450B	<i>Euxanthe tiberius</i>	Forest Queen	3.75
● P450A	<i>Euxanthe wakefieldi</i>	Forest Queen	3.75
P460	<i>Hypolimnas antevorta</i>	Egg-fly	4.00
● P460A	<i>Hypolimnas anthedon</i>	Variable Eggfly	4.00
P469	<i>Hypolimnas deceptor</i>	Eggfly	4.00
P462	<i>Hypolimnas misippus</i>	Mimic	4.00
● P463	<i>Hypolimnas monterionis</i>	Black-tipped Diadem	4.00
P464A	<i>Hypolimnas salmacis</i>	Blue Diadem	4.00
● P464	<i>Hypolimnas usambara</i>	Red Spot Diadem	4.00

NYMPHALIDAE

● Regular inventory

P463
Junonia hiertaP464D
Junonia natalicaP465
Junonia octaviaP466
Junonia oenoneP466H
Junonia tereaP374
Pseudacraea boisduvali● P375
Pseudacraea lucretia● P488B
Salamis anacardiiP488C
Salamis cacta● P488A
Salamis parhassus

PAPILIONIDAE

● P521
Graphium angolans● P522
Graphium antheus● P523
Graphium colonnaP524K
Graphium kirbyiP524L
Graphium leonidas● P524Q
Graphium policesesP525
Graphium porthaon● P545
Papilio constantinus● P548
Papilio dardanus● P550
Papilio demodocus● P554
Papilio echerioidesP573
Papilio hornimani● P585
Papilio nireus● P585A
Papilio ophidicephalusP590
Papilio phorcas

		COMMON NAME	PRICE USD
NYMPHALIDAE			
P463	<i>Junonia hierta</i>	Yellow Pansy	4.00
P464D	<i>Junonia natalica</i>	Brown Commodore	4.00
P465	<i>Junonia octavia</i>	Gaudy Commodore	4.00
P466	<i>Junonia oenone</i>	Blue-spotted Pansy	4.00
P466H	<i>Junonia terea</i>	Soldier Commodore	4.00
P374	<i>Pseudacraea boisduvali</i>	Trimen's False Acraea	3.50
● P375	<i>Pseudacraea lucretia</i>	False Diadem	3.50
● P488B	<i>Salamis anacardii</i>	Clouded Mother Of Pearl	3.75
P488C	<i>Salamis cacta</i>	Lilac Beauty	3.75
● P488A	<i>Salamis parhassus</i>	Forest Mother Of Pearl	3.75
PAPILIONIDAE			
● P521	<i>Graphium angolanus</i>	African White Swallowtail	3.50
● P522	<i>Graphium antheus</i>	Large Striped Swordtail	3.50
● P523	<i>Graphium colonna</i>	Black Swordtail	3.50
P524K	<i>Graphium kirbyi</i>	Kirby's Swordtail	3.50
P524L	<i>Graphium leonidas</i>	Veined Swallowtail	3.50
● P524Q	<i>Graphium policeses</i>	Common Swordtail	3.50
P525	<i>Graphium porthaon</i>	Coastal Swordtail	3.50
● P545	<i>Papilio constantinus</i>	Constantine's Swallowtail	4.00
● P548	<i>Papilio dardanus</i>	Mocker Swallowtail	4.00
● P550	<i>Papilio demodocus</i>	Orchard Swallowtail	4.00
● P554	<i>Papilio echerioides</i>	White-banded Swallowtail	4.00
P573	<i>Papilio hornimani</i>	Horniman's Swallowtail	4.00
● P585	<i>Papilio nireus</i>	Blue-banded Swallowtail	4.00
● P585A	<i>Papilio ophidicephalus</i>	Emperor Swallowtail	4.00
P590	<i>Papilio phorcas</i>	Green-patch Swallowtail	4.00

DANAIDAE

● Regular inventory



P205
Amauris niavius



● **P206**
Amauris ochlea



P265
Tirumala petiverana

SATURNIIDAE



● **P803A**
Argema mimosae



P803
Argema mitrei

URANIIDAE



P820
Chrysiridia croesus



P823
Chrysiridia ripheus



		COMMON NAME	PRICE USD
DANAIDAE			
P205	<i>Amauris niavius</i>	Friar	3.50
● P206	<i>Amauris ochlea</i>	Novice	3.50
P265	<i>Tirumala petiverana</i>	African Blue Tiger	3.50
SATURNIIDAE			
● P803A	<i>Argema mimosae</i>	African Moon Moth	4.75
P803	<i>Argema mittrei</i>	Madagascar Moon Moth	10.00
URANIIDAE			
P820	<i>Chrysiridia croesus</i>	Tanzanian Sunset Moth	5.00
P823	<i>Chrysiridia ripheus</i>	Madagascar Sunset Moth	5.00

NYMPHALIDAE

● Regular inventory



● P433
Cethosia biblis



● P435
Cethosia cyane



● P437
Cethosia hypsea



P439
Cethosia penthesilea



● P445
Doleschallia bisaltide



P447
Dophla evelina



● P461
Hypolimnas bolina



● P462
Hypolimnas misippus



● P481
Junonia almana



● P482
Junonia atlites



● P484
Junonia iphita



P485
Junonia lemonias



● P467
Kallima inachus



P468
Kallima paralekta



● P446
Lexias dirtea



● P477
Parthenos sylvia lilacinus



● P478
P. sylvia philippensis



● P480
P. sylvia violaceae



P479
Phalanta phalantha



P494
Tanaecia flora



P498
Tanaecia julii



P495
Vindula arsinoe



● P496
Vindula dejone



P497
Vindula erota

		COMMON NAME	PRICE USD	
NYMPHALIDAE				
●	P433	<i>Cethosia biblis</i>	Common Lacewing	2.75
●	P435	<i>Cethosia cyane</i>	Leopard Lacewing	2.75
●	P437	<i>Cethosia hypsea</i>	Malay Lacewing	2.75
	P439	<i>Cethosia penthesilea</i>	Orange Lacewing	2.75
●	P445	<i>Doleschallia bisaltide</i>	Autumn Leaf	2.75
	P447	<i>Dophla evelina</i>	Red-spot Duke	2.75
●	P461	<i>Hypolimnas bolina</i>	Great Eggfly	2.50
●	P462	<i>Hypolimnas misippus</i>	Mimic	2.50
●	P481	<i>Junonia almana</i>	Peacock Pansy	2.50
●	P482	<i>Junonia atlites</i>	Grey Pansy	2.50
●	P484	<i>Junonia iphita</i>	Chocolate Pansy	2.50
	P485	<i>Junonia lemonias</i>	Lemon Pansy	2.50
●	P467	<i>Kallima inachus</i>	Orange Dead Leaf	3.75
	P468	<i>Kallima paralekta</i>	Indian Leaf Butterfly	3.75
●	P446	<i>Lexias dirtea</i>	Archduke	3.75
●	P477	<i>Parthenos sylvia lilacinus</i>	Blue Clipper	2.75
●	P478	<i>Parthenos sylvia philippensis</i>	Brown Clipper	2.75
●	P480	<i>Parthenos sylvia violaceae</i>	Violet Clipper	2.75
	P479	<i>Phalanta phalantha</i>	Common Leopard	2.50
	P494	<i>Tanaecia flora</i>	Baron	2.50
	P498	<i>Tanaecia julii</i>	Juli Baron	2.50
	P495	<i>Vindula arsinoe</i>	Cruiser	3.25
●	P496	<i>Vindula dejone</i>	Malay Cruiser	3.25
	P497	<i>Vindula erota</i>	Large Cruiser	3.25

PAPILIONIDAE

● Regular inventory



● P504
Atrophaneura semperi



● P515
Chilasa clytia



● P520
Graphium agamemnon



● P524
Graphium doson



P526
Graphium sarpedon



P528
Pachliopta aristolachiae



● P534
Pachliopta kotzebuea



● P570
Papilio helenus



● P574
Papilio lowii



● P580
Papilio memnon



● P582
Papilio nephelus



● P586
Papilio palinurus



● P596
Papilio polytes



● P606
Papilio rumanzovia



● P613
Papilio ulysses

PAPILIONIDAE (BIRDWINGS)



● P653
Ornithoptera priamus



P655
Trogonoptera brookiana



P650
Trogonoptera trojana



P656
Troides helena



● P651
Troides rhadamantus

SATURNIIDAE



● P800
Attacus atlas

		COMMON NAME	PRICE USD
PAPILIONIDAE			
● P504	<i>Atrophaneura semperi</i>	Bat Wing	4.50
● P515	<i>Chilasa clytia</i>	Common Mime	2.75
● P520	<i>Graphium agamemnon</i>	Tailed Jay	2.75
● P524	<i>Graphium doson</i>	Common Jay	2.75
	P526 <i>Graphium sarpedon</i>	Common Blue Bottle	2.25
	P528 <i>Pachliopta aristolachiae</i>	Common Rose	2.75
● P534	<i>Pachliopta kotzebuea</i>	Pink Rose	2.75
● P570	<i>Papilio helenus</i>	Red Helen	3.25
● P574	<i>Papilio lowii</i>	Great Yellow Mormon	3.25
● P580	<i>Papilio memnon</i>	Great Mormon	3.25
● P582	<i>Papilio nephelus</i>	Black & White Helen	3.25
● P586	<i>Papilio palinurus</i>	Banded Peacock	3.50
● P596	<i>Papilio polytes</i>	Common Mormon	2.75
● P606	<i>Papilio rumanzovia</i>	Scarlet Mormon	3.50
● P613	<i>Papilio ulysses</i>	Blue Mountain Swallowtail	10.00
PAPILIONIDAE (BIRDWINGS)			
● P653	<i>Ornithoptera priamus</i>	New Guinea Birdwing	10.00
	P655 <i>Trogonoptera brookiana</i>	Rajah Brooks Birdwing	10.00
	P650 <i>Trogonoptera trojana</i>	Trojan Birdwing	10.00
	P656 <i>Troides helena</i>	Common Birdwing	4.50
● P651	<i>Troides rhadamantus</i>	Common Birdwing	4.50
SATURNIIDAE			
● P800	<i>Attacus atlas</i>	Atlas Moth	3.50

DANAIDAE

● Regular inventory



P214
Danaus chrysippus



P219
Danaus melanippus



P231
Euploea camaralzeman



P234
Euploea modesta



P232
Euploea mulciber



● **P240**
Idea leuconoe



P242
Idea lynceus



● **P250**
Ideopsis juvena



● **P252**
Ideopsis vulgaris



P225
Parantica vitrina



P220
Tirumala hamata



P222
Tirumala limniace



● **P226**
Tirumala septentrionis

PIERIDAE



P722
Appias libythea



P730
Catopsilia pomona



● **P732**
Catopsilia pyranthe



● **P734**
Catopsilia scylla



● **P760**
Hebomoia glaucippe



		COMMON NAME	PRICE USD
DANAIDAE			
P214	<i>Danaus chrysippus</i>	Plain Tiger	2.75
P219	<i>Danaus melanippus</i>	Common Tiger	2.75
P231	<i>Euploea camaralzeman</i>	Malayan Crow	4.00
P234	<i>Euploea modesta</i>	Plain Blue Crow	4.00
P232	<i>Euploea mulciber</i>	Striped Blue Crow	4.00
● P240	<i>Idea leuconoe</i>	Paper Kite	3.25
P242	<i>Idea lynceus</i>	Tree Nymph	3.25
● P250	<i>Ideopsis juvena</i>	White Tree Nymph	2.75
● P252	<i>Ideopsis vulgaris</i>	Blue Glassy Tiger	2.75
P225	<i>Parantica vitrina</i>	Glassy Tiger	2.25
P220	<i>Tirumala hamata</i>	Blue Tiger	2.25
P222	<i>Tirumala limniace</i>	Blue Tiger	2.25
● P226	<i>Tirumala septentrionis</i>	Dark Blue Tiger	2.25
PIERIDAE			
P722	<i>Appias libythea</i>	Common Albatross	2.75
P730	<i>Catopsilia pomona</i>	Lemon Emigrant	2.75
● P732	<i>Catopsilia pyranthe</i>	Mottled Emigrant	2.75
● P734	<i>Catopsilia scylla</i>	Orange Emigrant	2.75
● P760	<i>Hebomoia glaucippe</i>	Great Orange Tip	3.00

HELICONIIDAE

● Regular inventory



● P302
Dione juno



P303
Dione moneta



P306
Dryadula phaetusa



● P304
Dryas iulia



● P310
Eueides isabella



P311
Eueides procula



● P318
Heliconius atthis



● P322
Heliconius charitonius



P321
Heliconius clysonymus



● P320
Heliconius cydno



● P325
Heliconius doris



● P326
Heliconius eleuchia



● P324
Heliconius erato



● P328
Heliconius hecale



P337
Heliconius hecalesia



P338
Heliconius hewitsoni



● P330
Heliconius hortense



● P332
Heliconius ismenius



● P334
Heliconius melpomene



● P333
Heliconius numata



P335
Heliconius sapho



● P336
Heliconius sara



P323
Heliconius telesiphe



P340
Philaethria dido



		COMMON NAME	PRICE USD	
HELICONIIDAE				
●	P302	<i>Dione juno</i>	Silver Spotted Flambeau	2.75
	P303	<i>Dione moneta</i>	Mexican Silverspot	2.75
	P306	<i>Dryadula phaetusa</i>	Banded Orange	2.75
●	P304	<i>Dryas iulia</i>	Julia	3.25
●	P310	<i>Eueides isabella</i>	Isabella Tiger	3.50
	P311	<i>Eueides procula</i>	Nonpassionate Heliconian	3.50
●	P318	<i>Heliconius atthis</i>	False Zebra Longwing	3.75
●	P322	<i>Heliconius charitonius</i>	Zebra Longwing	3.75
	P321	<i>Heliconius clysonymus</i>	Yellow Longwing	3.75
●	P320	<i>Heliconius cydno</i>	Blue And White Longwing	3.75
●	P325	<i>Heliconius doris</i>	Doris Longwing	3.75
●	P326	<i>Heliconius eleuchia</i>	Large Eluchia	3.75
●	P324	<i>Heliconius erato</i>	Small Postman	3.75
●	P328	<i>Heliconius hecale</i>	Golden Helicon	3.75
	P337	<i>Heliconius hecalesia</i>	Gold Postman	3.75
	P338	<i>Heliconius hewitsoni</i>	Hewitsoni Longwing	3.75
●	P330	<i>Heliconius hortense</i>	Large Postman	3.75
●	P332	<i>Heliconius ismenius</i>	Tiger Longwing	3.75
●	P334	<i>Heliconius melpomene</i>	Postman	3.75
●	P333	<i>Heliconius numata</i>	Numata Longwing	3.75
	P335	<i>Heliconius sapho</i>	Sapho Longwing	3.75
●	P336	<i>Heliconius sara</i>	Small Blue Grecian	3.75
	P323	<i>Heliconius telesiphe</i>	Telesiphe Longwing	3.75
	P340	<i>Philaethria dido</i>	Bamboo Page	3.50

Neotropical



DANAIDAE

● Regular inventory



P264
Anetia thirza



● **P260**
Lycorea cleobaea

ITHOMIIDAE



● **P390**
Dircenna dero



P370
Godyris zavaleta



P379
Greta andromica



● **P380**
Greta oto



P376
Ithomia heraldica



P382
Mechanitis menapis



● **P384**
Mechanitis polymnia



P388
Melinaea ethra



● **P371**
Methona confusa



● **P381**
Miralera cymothoe



P391
Pteronymia agalla



P391a
Pteronymia dispaena



P391b
Pteronymia latilla



P383
Pteronymia notilla



P391c
Pteronymia veia



● **P385**
Thyridia psidii



● **P386**
Tithorea harmonia



● **P387**
Tithorea tarricina



		COMMON NAME	PRICE USD
DANAIDAE			
P264	<i>Anetia thirza</i>	Cloud-Forest King	3.50
● P260	<i>Lycorea cleobaea</i>	Large Tiger	3.50
ITHOMIIDAE			
● P390	<i>Dircenna dero</i>	Dero Clearwing	3.50
P370	<i>Godyris zavaleta</i>	Variegated Glasswing	3.50
P379	<i>Greta andromica</i>	Dazzling Glasswing	3.25
● P380	<i>Greta oto</i>	Costa Rica Clearwing	3.25
P376	<i>Ithomia heraldica</i>	Two Stripe Clearwing	3.50
P382	<i>Mechanitis menapis</i>	Variable Tigerwing	3.50
● P384	<i>Mechanitis polymnia</i>	Disturbed Tigerwing	3.50
P388	<i>Melinaea ethra</i>	Rusty Tigerwing	3.50
● P371	<i>Methona confusa</i>	Giant Glasswing	3.50
● P381	<i>Miraleria cymothoe</i>	Columbian Clearwing	3.50
P391	<i>Pteronymia agalla</i>	Agalla Clearwing	3.25
P391a	<i>Pteronymia dispaena</i>	Simple Clearwing	3.25
P391b	<i>Pteronymia latilla</i>	Latilla Clearwing	3.25
P383	<i>Pteronymia notilla</i>	Tiger Clearwing	3.25
P391c	<i>Pteronymia veia</i>	Veia Clearwing	3.25
● P385	<i>Thyridia psidii</i>	Melantho Tigerwing	3.50
● P386	<i>Tithorea harmonia</i>	Common Tiger Glassywing	3.50
● P387	<i>Tithorea tarricina</i>	Spotted Tiger Glassywing	3.50

NYMPHALIDAE

● Regular inventory



P400B
Adelpha celerio



P400C
Adelpha cocala



P409
Adelpha cytherea



● **P415**
Adelpha fessonia



P418
Adelpha melanthe



P492
Agrias amydon



P400
Anartia amathea



P410
Anartia fatima



● **P411**
Archaeoprepona demophon



● **P412**
A. demophon



P413
Archaeoprepona meander



● **P425**
Biblis hyperia



P434
Callicore pitheas



P429
Catonephele mexicana



● **P431**
Catonephele numilia



● **P443**
Colobura dirce



● **P405**
Consul electra



P405A
Consul excellens



● **P442**
Consul fabius



P436
Doxocopa callianira



P438
Doxocopa laure



P438A
Doxocopa pavon



P450C
Eunica augusta

NYMPHALIDAE

● Regular inventory



● P451
Hamadryas amphinome



P452
Hamadryas arinome



● P457
Hamadryas atlantis



P453
Hamadryas februa



● P454
Hamadryas feronia



P455
Hamadryas fornax



P456
Hamadryas glauconome



P455A
H. guatemalena



● P456A
Hamadryas laodamia



P416
Historis acheronta



P458
Historis odius



● P459
Hypna clytemnestra



● P444
Memphis eurypile



P449
Memphis forreri



P483
Memphis glycerium



P474
Memphis nessus



● P406
Memphis nobilis



P487
Memphis perenna



P487a
Memphis proserpina



● P471
Myscelia cyaniris



● P473
Myscelia ethusa



P476
Nessaea aglaura



P395
Panacea procilla



● P414
Prepona omphale



● P489
Siderone nemesis



● P490
Siproeta epaphus



● P491
Siproeta stelenes



● P349
Smyrna blomfildia

		COMMON NAME	PRICE USD	
NYMPHALIDAE				
●	P451	<i>Hamadryas amphinome</i>	King Cracker	3.50
	P452	<i>Hamadryas arinome</i>	Starry Night	3.50
●	P457	<i>Hamadryas atlantis</i>	Black-patched Cracker	3.50
	P453	<i>Hamadryas februa</i>	Hatian Cracker	3.50
●	P454	<i>Hamadryas feronia</i>	Grey Cracker	3.50
	P455	<i>Hamadryas fornax</i>	Yellow Cracker	3.50
	P456	<i>Hamadryas glauconome</i>	Queen Cracker	3.50
	P455A	<i>Hamadryas guatemalena</i>	Guatemalan Cracker	3.50
●	P456A	<i>Hamadryas laodamia</i>	Starry Cracker	3.50
	P416	<i>Historis acheronta</i>	Tailed Cecropian	3.50
	P458	<i>Historis odius</i>	Orion Cecropian	3.50
●	P459	<i>Hypna clytemnestra</i>	Silver-studded Leafwing	3.50
●	P444	<i>Memphis euryppyle</i>	Pointed Leafwing	3.50
	P449	<i>Memphis forreri</i>	Forrer's Leafwing	3.50
	P483	<i>Memphis glycerium</i>	Crinkled Leafwing	3.50
	P474	<i>Memphis nessus</i>	Pink Leafwing	3.50
●	P406	<i>Memphis nobilis</i>	Noble Leafwing	3.50
	P487	<i>Memphis perenna</i>	Perenna Leafwing	3.50
	P487a	<i>Memphis proserpina</i>	Proserpina Leafwing	3.50
●	P471	<i>Myscelia cyaniris</i>	Whitened Bluewing	3.50
●	P473	<i>Myscelia ethusa</i>	Mexican Bluewing	3.50
	P476	<i>Nessaea aglaura</i>	Blue-banded Nymph	3.50
	P395	<i>Panacea procilla</i>	Procilla Beauty	3.50
●	P414	<i>Prepona omphale</i>	Blue King Shoemaker	3.75
●	P489	<i>Siderone nemesis</i>	Nemesis	3.50
●	P490	<i>Siproeta epaphus</i>	Black And Tan Page	3.50
●	P491	<i>Siproeta stelenes</i>	Malachite	3.50
●	P349	<i>Smyrna blomfieldia</i>	Blomfield's Beauty	3.50

BRASSOLIDAE

● Regular inventory



P110
Brassolis isthmia



● **P100**
Caligo atreus



● **P102**
Caligo eurilochus



● **P104**
Caligo illioneus



● **P106**
Caligo memnon



● **P107**
Caligo oileus



P108
Caligo uranus



P124
Eryphanis aesacus



P125
Eryphanis polyxena



P126
Opsiphanes bogotanus



P120
Opsiphanes cassina



P121
Opsiphanes quiteria



● **P122**
Opsiphanes tamarindi

MORPHIDAE



P202
Morpho achilles



P209
Morpho amathonte



P203
Morpho grenadensis



● **P201**
Morpho peleides



● **P208**
Morpho polyphemus

PIERIDAE



● **P700**
Anteos clorinde



P759
Anteos maerula



P754
Appias drusilla



P755
Ascia josephina



● **P756**
Ascia limona



P772
Perrhybris pyrha



P766
Phoebis argante



P768
Phoebis philea



P769
Phoebis rurina



P770
Phoebis sennae

PAPILIONIDAE

● Regular inventory



● P511
Battus belus



P513
Battus lycidas



● P517A
Eurytides branchus



● P517
Eurytides epidaus



P516
Eurytides euryleon



P518A
Eurytides phaon



● P519
Eurytides philolaus



● P519A
Eurytides thymbraeus



● P538
Papilio anchisiades



● P539
Papilio androgeus



● P541
Papilio astyalus



● P556
Papilio erostratus



● P564
Papilio garamus



P595
Papilio pilumnus



● P610
Papilio thoas



● P611
Papilio torquatus



P609
Papilio victorinus



● P615
Parides arcas



● P615A
Parides childrenae



● P615E
Parides erithalion



P621
Parides eurimedes



● P616
Parides iphidamas



● P617
Parides montezuma



● P618
Parides photinus



P619
Parides polyzelus

SATURNIIDAE



● P815
Rothschildia lebeau



P816
Rothschildia orizaba

URANIIDAE



P823
Urania fulgens

Beetles and other Insects

LPS will place consolidated orders directly with beetle breeders in Taiwan. We have previously worked with **Kingdom of Beetles** and **Titan Monster Shop**. I will send a request for orders in November and April. Costs will be the same as their website and postage will be calculated from the number of orders consolidated. Please have your USDA Interstate Movement permits updated before ordering and check 'life stages' if considering larvae.

Kingdom of Beetles <http://screw-wholesale.myweb.hinet.net/>
Titan Monster Shop <http://titan.insectweb.org/beetleshop/>

Contact LPS to discuss special orders if needed outside of the November/April window.

Live insects are supplied from **CRES** and **TEH** through the year with their weekly shipments to LPS. Contact their offices directly for species availability and pricing.



Butterfly House (PG) Sdn Bhd (formerly TEH)
830 Jalan Teluk Bahang
11050 Penang, Malaysia
+604-881-1199 (Supplies)
+604-885-1384 (General)
btchin@butterfly-insect.com
bt.chin@entopia.com



Costa Rica Entomological Supply
Alajuela, Apdo. 2132-4050
011-506-2438-0400
011-506-2438-0300 Fax
paola@butterflyfarm.co.cr

Live insect photos were supplied by LPS, CRES, and TEH.



New arrivals from Taiwan.



Inspecting a box of insects from Malaysia.

* not actual size

BEETLES



Aegus platyodon *Agestrata orichalca* *Allomyrina davidis* *Allomyrina dichotomus* *Allomyrina pfeifferi*



Allotopus moellenkampi *A. moseri* *Augosoma centaurus* *Batocera albofasciata* *Batocera hector*



Allotopus moseri



Batocera albofasciata

Misc



Chalcosoma atlas



Chalcosoma caucasus



Chalcosoma moellenkampi



Cheirotonus janson



Cheirotonus parryi



Cheirotonus peracanus



Cyclommatus metallifer



C. mniszechi



C. speciosus



Cyphonistes vailatus



Dicronorhina derbyana



* not actual size

BEETLES



Dorcus alcides



Dorcus antaeus



Dorcus bucephalus



Dorcus curvidens



Dorcus grandis



Dorcus hopei



Dorcus metacostatus



Dorcus mirabilis



Dorcus musimon



Dorcus parryi



Dorcus rectus



Dorcus titanus



Dorcus yamadai



Batocera hector



Heterorrhina sexmaculata

Misc

BEEETLES

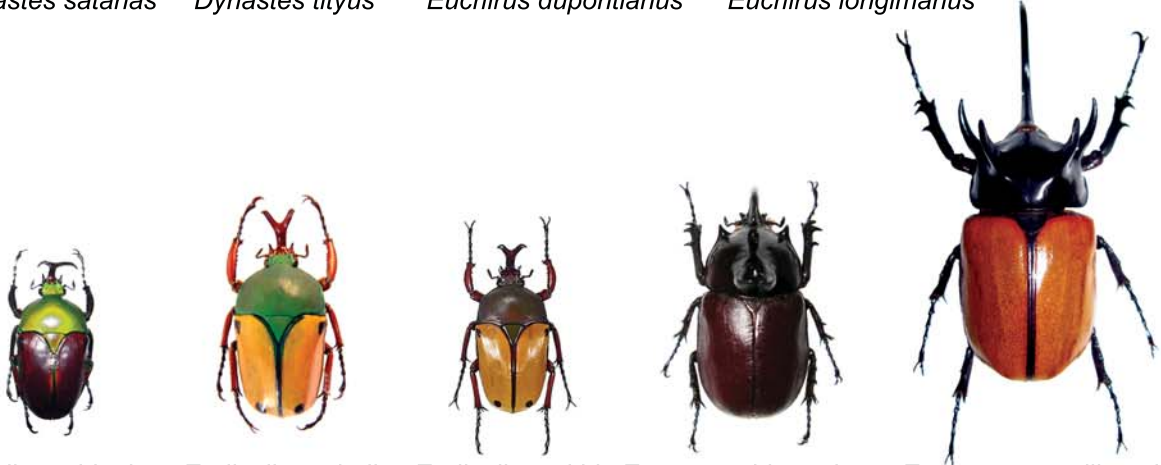


Dynastes granti *Dynastes hercules* *Dynastes hyllus* *Dynastes maya* *Dynastes neptunus*



Dynastes satanas *Dynastes tityus* *Euchirus dupontianus* *Euchirus longimanus*

MISC



Eudicella aethiopica *Eudicella euthalia* *Eudicella smithi* *Eupatorus birmanicus* *Eupatorus gracilicornis*

* not actual size

BEETLES



Goliathus albosignatus



Goliathus goliathus



Goliathus orientalis



Golofa claviger



Golofa pizarro



Golofa porteri



Hexarthrus deyrollei



Hexarthrus forsteri



Hexarthrus mandibularis



Hexarthrus parryi



Homoderus mellyi



Hexarthrus deyrollei



Jumnos ruckerii

Misc

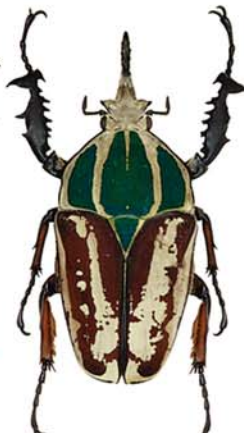
BEEETLES



Jumnos ruckeri *Lamprima adolphinae* *Lamprima aurata* *Lamprima tasmania* *Lucanus cervus* *Lucanus elephus*



Lucanus formosanus *Lucanus hermani* *Lucanus kanoi* *Lucanus lunifer* *Lucanus maculifemoratus* *Lucanus ogakii*



Macrochirus praetor *Macrotoma fisheri* *Mecynorhina oberthueri* *M. polyphemus* *M. troquata* *M. ugandensis*

MISC



* not actual size

BEE TL ES



Megasoma actaeon



Megasoma anubis



Megasoma elephas



Megasoma gyas



Megasoma janus



Megasoma mars



Megasoma occidentalis



Megasoma pachecoi

Misc

BEE
TLES



Mesopotus tarandus



Mormolyce phyllodes



Odontolabis femoralis



Odontolabis gazella



Odontolabis intermedia



Odontolabis wollastoni



Oryctes rhinoceros



Oryctes trituberculatus



Phalacrognathus muelleri

Misc



Propomacrus davidi



Prosopocoilus astacoides



Prosopocoilus bison



Prosopocoilus dissimilis



Prosopocoilus doesburgia

* not actual size

BEETLES



Prosopocoilus fabricei *P. fruhstorferi*

Prosopocoilus giraffa

Prosopocoilus hasterti

P. lafertei

P. motschulskyii



Prosopocoilus wallacei

Rhaetulus crenatus

Rhaetulus dideri

Sagra buqueti

Sagra femorata

Sagra longicornis



Strategus aloeus

Xylotrupes florensis

Xylotrupes gideon

Xylotrupes pubescens



Rhomborhina sp.



Sagra femorata

Misc

MANTIDS



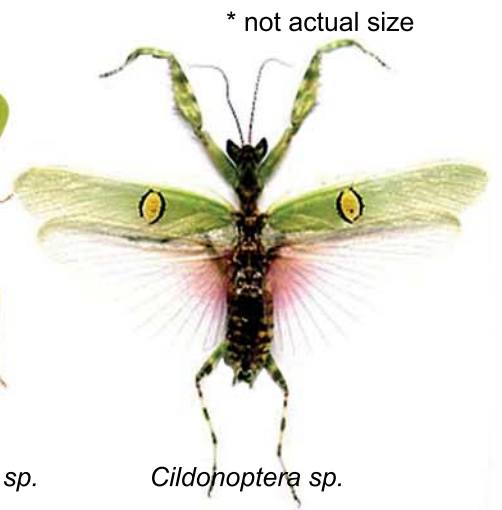
Acanthops falcata



Callimantis antillarum



Choeradodis sp.



Cildonoptera sp.

* not actual size



Deroplatys dessicata



Deroplatys lobata



Deroplatys truncata



Ephierodula heteroptera



Euchomenella heteroptera



Hierodula stalii



Hymenopus coronatus



Theopropus elegans



Ephierodula sp.

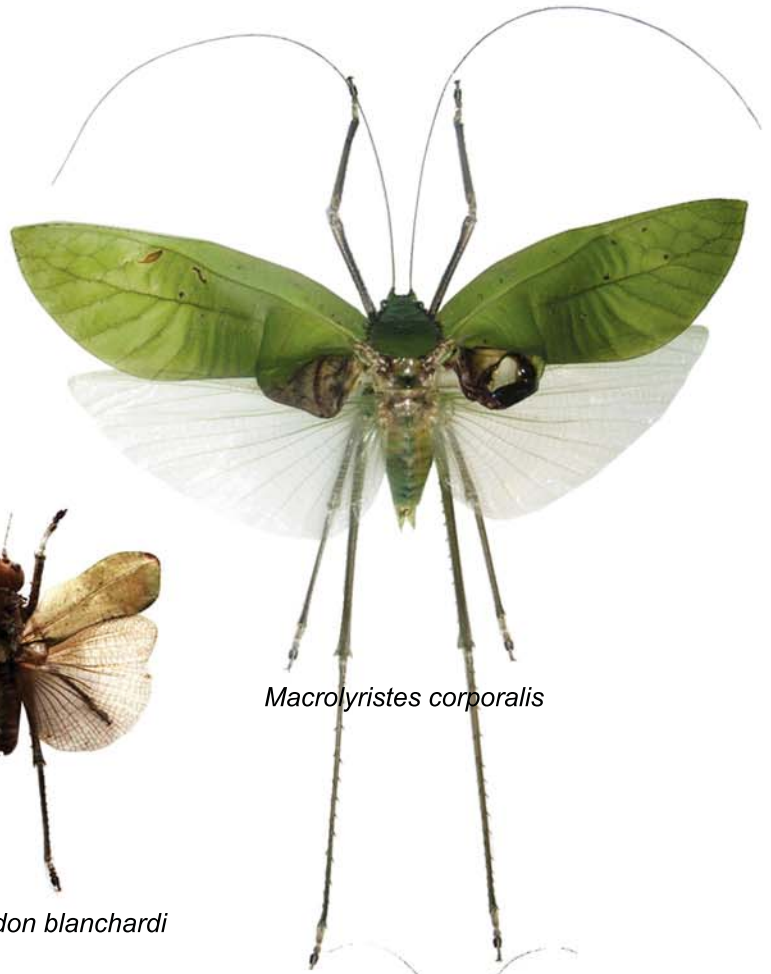
Misc

* not actual size

ORTHOPTERA



Ancylocha fenestrata



Macrolyristes corporalis



Eumegaladon blanchardi



Mecopoda elongata



Onamarchus cretaceus



Sanaa intermedia



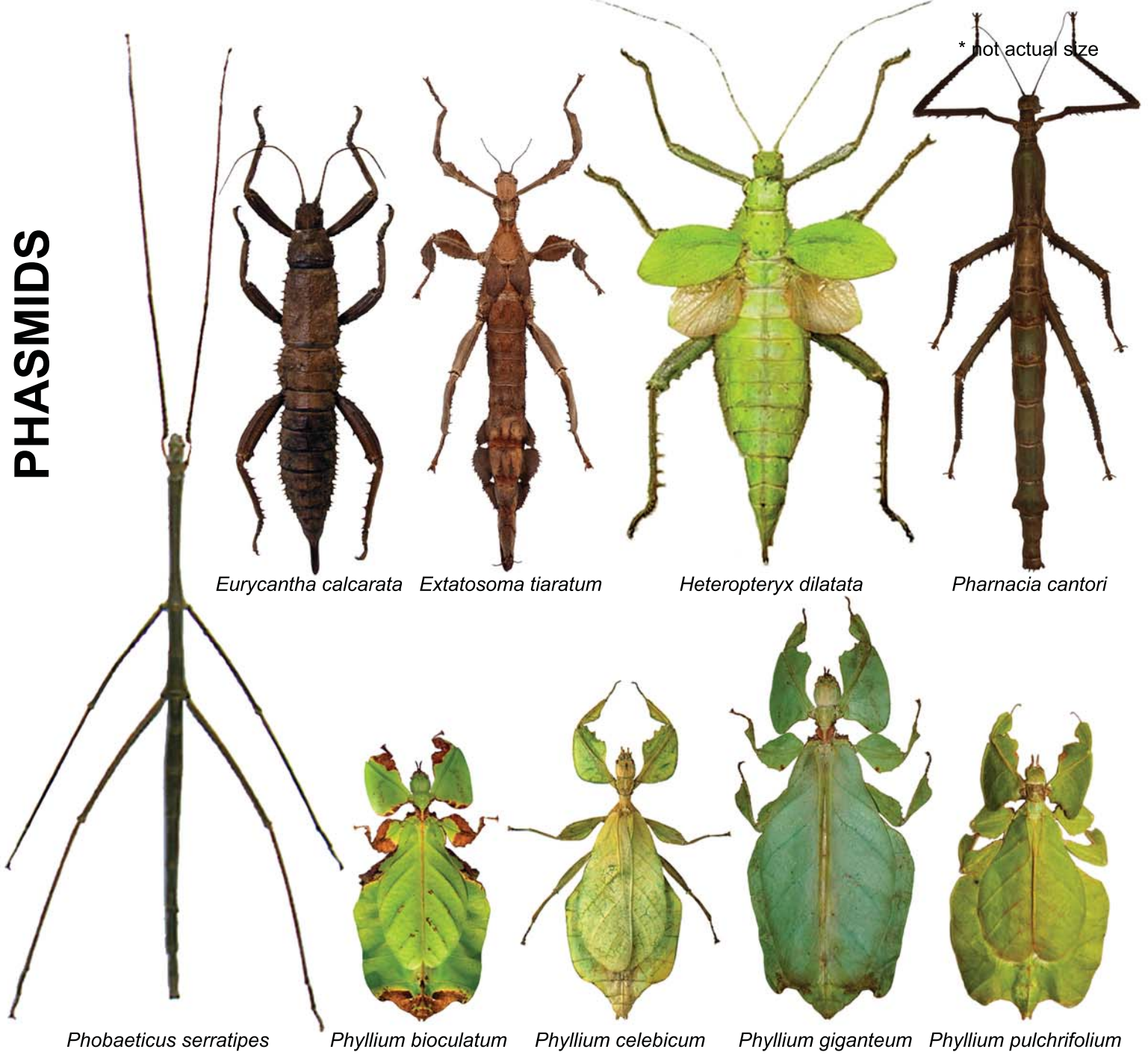
Tympanophyllum sp.



Pseudophyllus sp.

Misc

PHASMIDS



Eurycantha calcarata

Extatosoma tiaratum

Heteropteryx dilatata

Pharnacia cantori

Phobaeticus serratipes

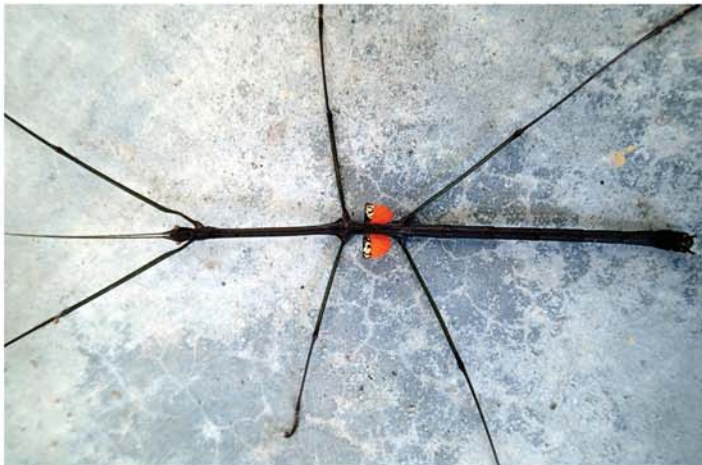
Phyllium bioculatum

Phyllium celebicum

Phyllium giganteum

Phyllium pulchrifolium

Misc



Phaeopharos struthioneus



Phyllium giganteum



Costa Rica Entomological Supply

Email: cres@butterflyfarm.co.cr

Imported from CRES and shipped within the US with a valid USDA Interstate Movement permit. Contact CRES for pricing and availability.



Orthoptera	2	<i>Copiphora hastata</i>	Conehead Katydid
	1	<i>Copiphora rhinoceros</i>	Rhinoceros Katydid
	3	<i>Lirometopum coronatum</i>	Carnivorous Katydid
	4	<i>Mimetica moruifolia</i>	Leaf-mimic Katydid
Mantodea	6	<i>Acanthops falcataria</i>	Dead Leaf Mantis
	5	<i>Callimantis antillarum</i>	Green Praying Mantis
	7	<i>Choeradodis sp.</i>	Shield Mantis
Phasmidae	8	<i>Calynda bicuspis</i>	Stick Insect

SPIDERS AND THEIR KIN



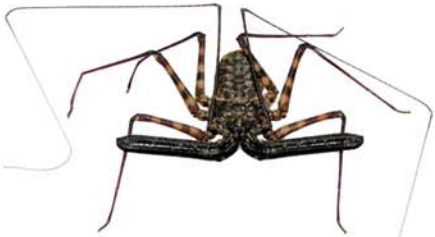
Otostigmus multidentus



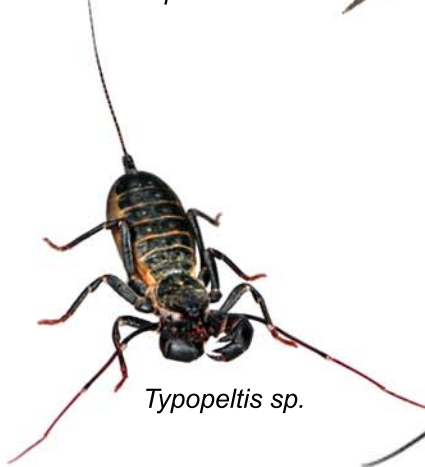
Heterometrus spinifer



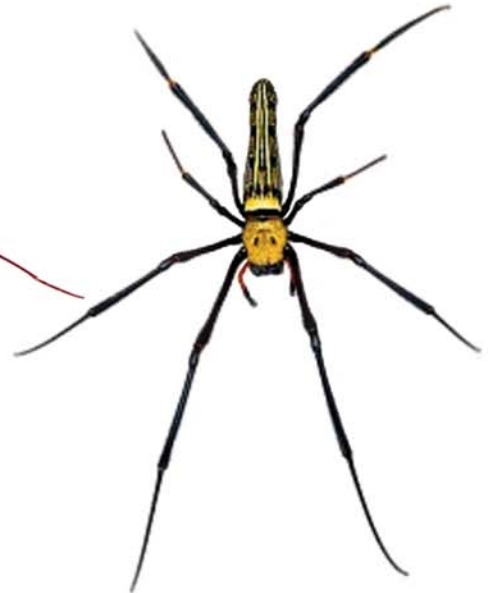
Scolopendra subspinipes



Damon diadema



Typopeltis sp.



Nephila maculata



Coremiocnemis validas



Heteropoda sp.

Misc



Typopeltis sp



Heteropoda sp

* not actual size

MISCELLANEOUS INSECTS



Archispirostreptus gigas



Epibolus pulchripes



Thyropygus pachyurus



Catacanthus incarnatus

Laccotrephes sp.

Gromphadorhina portentosa

Blaberus craniifer

Blaberus giganteus

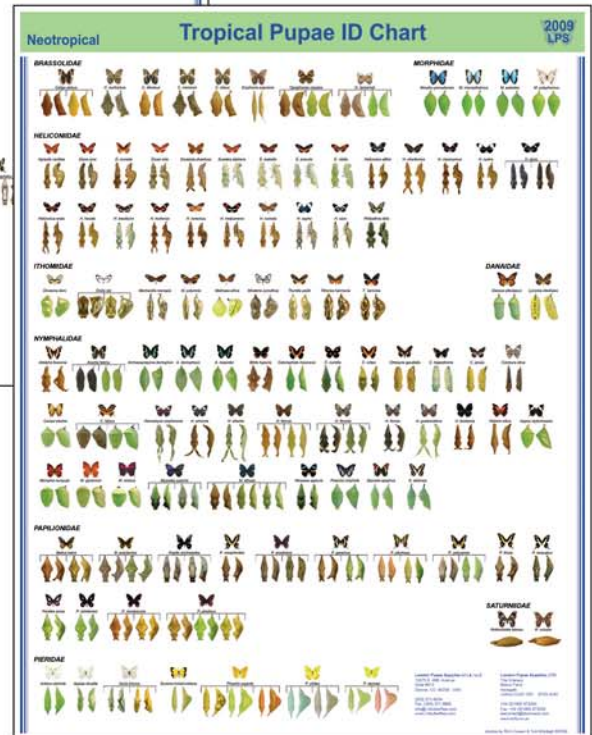
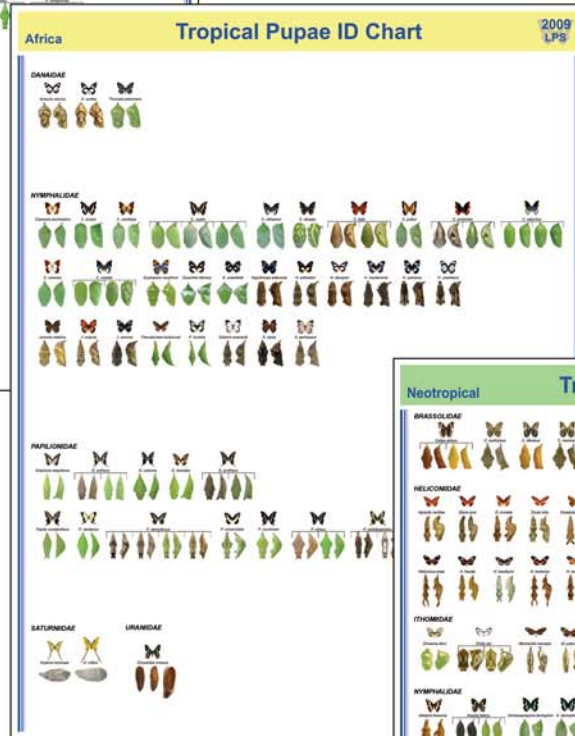
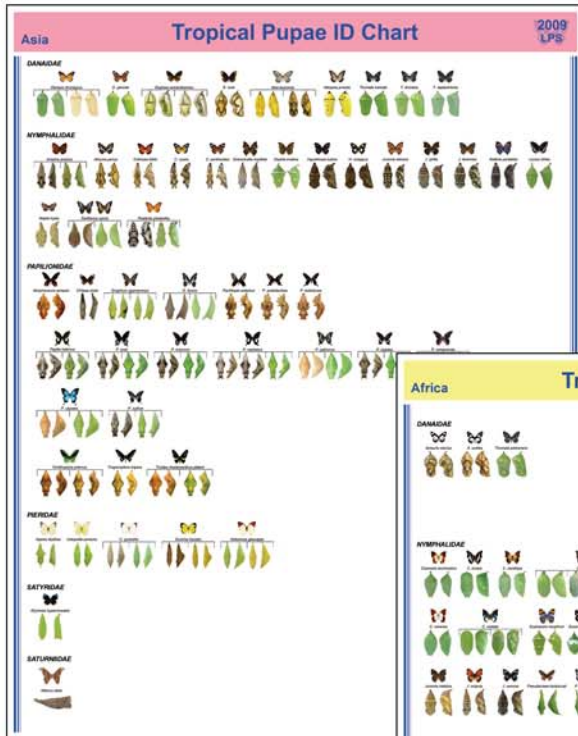


Catacanthus incarnatus



Laccotrephes sp.

Misc



Tropical Butterfly & Moth Pupae Posters

Three informative and beautifully illustrated posters feature images of tropical butterflies commonly displayed in butterfly houses, conservatories, and exhibits around the world. They are excellent tools for classrooms or for laboratory reference.

Butterflies are organized by family and the adult is pictured with side and back high-resolution photographs of the pupae for easy identification. These laminated posters are 22 x 28" (56 x 71 cm).

Available directly from LPS

\$ 45.00 / 3 poster set

Also available from



- 5284A** Illustrates the pupa of 52 species of Asian butterflies and moths.
 - 5284B** Illustrates the pupa of 48 species of African butterflies and moths.
 - 5284C** Illustrates the pupa of 104 species of Neotropical butterflies and moths.
- www.bioquip.com (310) 667-8800

Hi Protein Beetle / Insect Jelly



Yogurt Banana Brown Sugar
Honey Vitamin

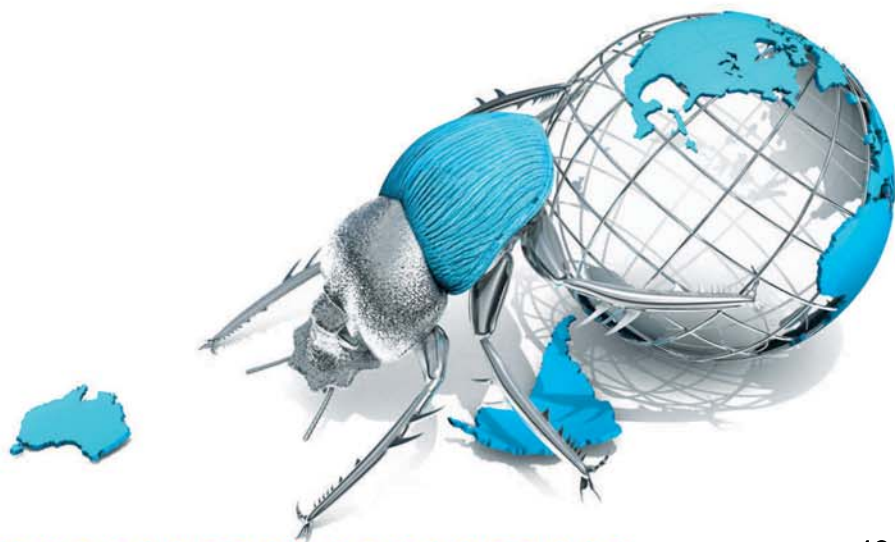
16g serving (30mm x 30mm)

\$ 50 /100 + postage

\$ 400 /1000 + postage

Misc





ASIA • AFRICA • CENTRAL AMERICA • SOUTH AMERICA

2016

IMPORTER OF TROPICAL BUTTERFLIES AND INSECTS

LPS



LPS LLC

12075 E 45th Ave #312

Denver, CO 80239

(303) 371-6004 • fax (303) 371-8998

office@LPSimports.com • www.LPSimports.com

Morpho cisseis

Cover photos by Tom Middagh